



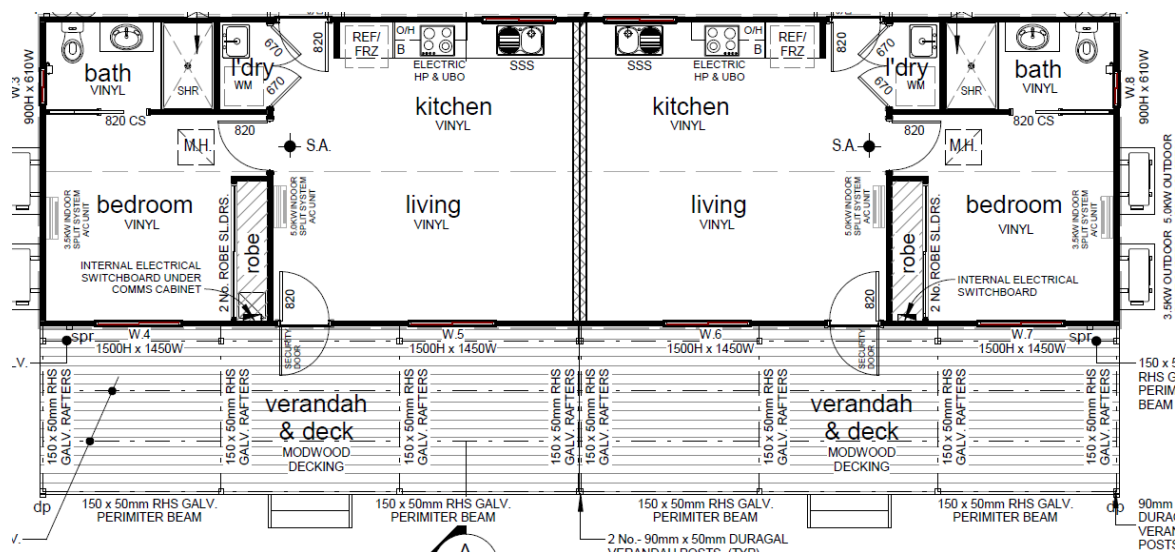
## Quotation

**Client:** Far West Local Health District

28/05/2022

**Project:** Dwelling – Studio Apartment

**General Description:** Two Studio style apartment with each having One Bedroom with robe, bathroom with Toilet, laundry, open plan Kitchen, Family & Meals. Relocatable Studio as per plan provided.  
Dwelling 92.70m<sup>2</sup>  
Verandah – 50.40m<sup>2</sup>  
Total – 143.10 m<sup>2</sup>



# Inclusion List

## Construction documentation

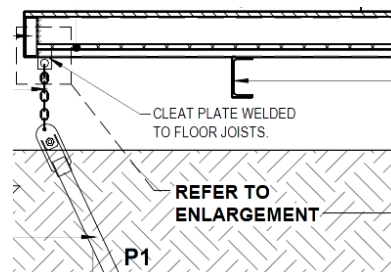
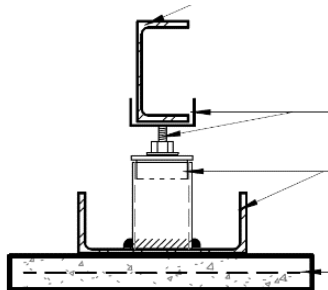


- Working Drawings
- Structural Computation
- Building Insurance

Note: Planning Permit & Building Permits are not included in this quote.

## Footing System

- Engineer Designed
- 18 x 450mm x 1000mm deep concrete footing.
- 18 x Steel Adjustable Stump



## Sub Floor Structure



Gregg & Sons (steel) Pty Ltd  
Buronga 50215155  
Steel All Types Cut To Size And  
Delivered!

- Engineer designed heavy duty galvanised sub floor
- Joist 150mm x 50mm x 2mm galvanised steel.
- Bearers 150 PFC painted with Rust Kill

## Frames and Trusses



- Pine wall frame design & constructed to Australian Standards.
- Pine Trusses at 900mm spacing design & constructed to Australian Standards.

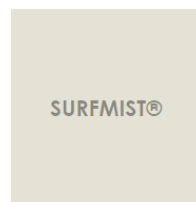
## Roof & Cladding



- Roof Corrugated
- Metal Fascia board 190mm x 33 mm
- Metal Gutter slotted OG 150mm x 60mm
- Cladding Corrugated



Roof, Fascia & Gutter



Walls

## Flooring, Tiles



- Tiles – Bathrooms floor & shower wall up to 2000mm and all splash backs
- Vinyl Plank – Meals, Kitchen, Family & Laundry
- Carpet – Bedrooms 1



## Plastering



Sunraysia Plastering Group P/L

- 10mm plasterboard to all walls and ceilings
- Bathroom -Wet board plaster
- 67mm cornice

## Windows



Item	Code	Window Type	Room	Quantity
1.	SSWXO_QO	Sliding Window	BED1,2LIVING/MEALS	4
	1810	Note: ARCS		
	1800	Finish Colour: Powdercoat STD - Colour TBA	Transom Height	600
		Wind Pressure: 700	Handling	LH Sash
		Glass Type: 4mm Clear Float Smart Glass SP10	Flyscreen Required	Fibreglass
		6mm Clear Float Smart Glass SP10	Catch Type	Non Lockable
			Sash Size Status	Equal Lites
			Sash Size	0
		Reveal Type: MDF 120mm	Reveal Location	All Round
			Head Type	S 3
			LH Coupling Bar	NONE
			RH Coupling Bar	NONE
			Colonial Bar	1_NONE
			Special Reveal Size	
2.	SSWXO	Sliding Window	KITCHEN	1
	1450	Note: ARCS		
	1000	Finish Colour: Powdercoat STD - Colour TBA	Handling	LH Sash
		Wind Pressure: 700	Flyscreen Required	Fibreglass
		Glass Type: 4mm Clear Float Smart Glass SP10	Catch Type	Non Lockable
			Sash Size Status	Equal Lites
			Sash Size	0
		Reveal Type: MDF 120mm	Reveal Location	All Round
			Head Type	S 3
			LH Coupling Bar	NONE
			RH Coupling Bar	NONE
			Colonial Bar	1_NONE
			Special Reveal Size	
3.	SSWXO	Sliding Window	BATH	1
	850	Note: ARCS		
	600	Finish Colour: Powdercoat STD - Colour TBA	Handling	LH Sash
		Wind Pressure: 700	Flyscreen Required	Fibreglass
		Glass Type: 6.38mm Translucent Laminated Glass - C	Catch Type	Non Lockable
			Sash Size Status	Equal Lites
			Sash Size	0
		Reveal Type: MDF 120mm	Reveal Location	All Round
			Head Type	S 3
			LH Coupling Bar	NONE
			RH Coupling Bar	NONE
			Colonial Bar	1_NONE
			Special Reveal Size	
4.	ASD100-2121	Sliding Door	LIVING	1
	2050	Note: SECURITY DOOR INCLUDED		
	2095	Finish Colour: Powdercoat STD - Colour TBA	Handling	Reverse
		Wind Pressure: 700	Flydoor Required	Safety Aluminium
		Glass Type: Safety Grille - SIZE	Stile Type	STD
		4mm Clear Toughened Smart Glass SP10	LOCK TYPE	Cyl/Snib BLK
			KEYED ALIKE	Default
		Reveal Type: MDF 120mm	REVEAL LOCATION	HEAD & JAMBS
			Frame Type	Std
			LH Coupling Bar	NONE
			RH Coupling Bar	NONE
			Head Coupling Bar	NONE
			Head Closure	NONE
			TRIM INTERLOCK	NO
			Colonial Bar	1_NONE
			Special Reveal Size	

SURFMIST®

Window Colour

## Shower screens & Robe



- Robe door -Bedroom 1 - Aluminium robe frame sliding door with Polytec insert
- Bathroom - Clear Glass shower screen
- 1 x Large Mirror

## Heating/cooling



- 2 x 7.1 kw Daikin ducted split system (1 each Unit)
- Fully programmable controller & thermostat.
- 6-year warranty of unit as per the manufacturer's conditions.



## Plumbing work



- All plumbing carried out on Building by Licenced Plumber

## Kitchen and Cabinetry



### Description

#### Kitchen

Supply and install standard range laminate postform benchtops with standard range laminate doors and panels.

Price includes

Base cupboards

Overhead cupboards including fridge overhead

1 banks of 3 soft close drawers

1 banks of 4 soft close drawers

#### Bathroom

Supply and install standard range laminate postform benchtops with standard range laminate doors and panels.

Price includes

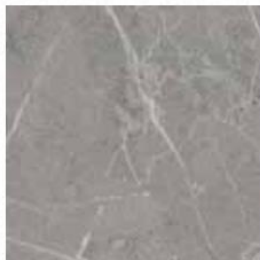
Base cupboards

#### Laundry

Supply and install standard range laminate doors and jamb

#### Bedroom 1

Supply 1 x white melamine ladder shelf units with 1 white melamine shelf



Bernini Marble

***Bench Top***



Polar White

***Cupboards Sheen***

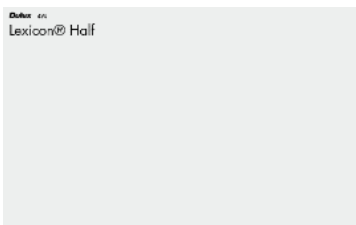


*Fashion White Gloss 75mm x 300mm  
Kitchen Splash Back.*

## Painting



- Internal walls two colours
- Colours (Dulux Colours)  
Walls – Lexicon Half  
Ceiling – White  
Door & Trimmings – Lexicon Half



## Insulation

- Exterior Walls – Gold Batts R2.0
- Ceiling – Gold Batts R5.0
- Roof – R1.5 Sarking
- Floor – 4mm Ply & Foil Board Super 15 R3.9



## Appliances



- Westinghouse - Under Bench Oven – (WVE614SC)
- Westinghouse - Rangehood - (WRR604SB)
- Westinghouse – Cook top – (WHC642BA)



60cm 4 zone electric  
ceramic cooktop  
WHC642BA  
★★★★



60cm multi-function 5 oven, stainless  
steel  
WVE614SC



60cm slide out rangehood, stainless  
steel  
WRR604SB

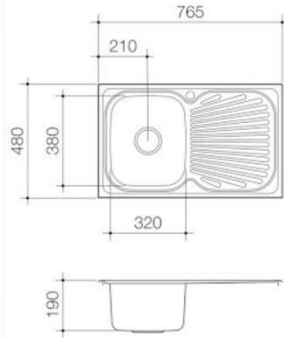


## Accessories

**Tradelink**®

## KITCHEN

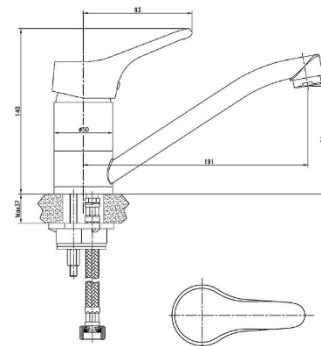
### VITAL SINGLE END BOWL



- Tradelink code –105643
- No Tap Hole
- Available in left or right hand bowl
- Ideal for a smaller kitchen or butler's pantry
- Minimalist trend, with embossed drainage
- Generous bowl size for ease of use when cooking and cleaning
- Premium 304 grade stainless steel
- Bowl volume : 19L

C L Δ R K

### ARMADA SINK MIXER

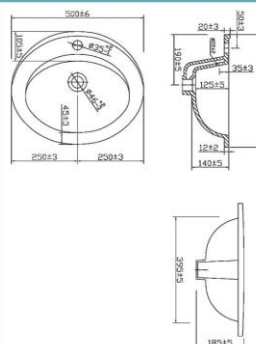


- Tradelink code – 133345
- Brass one piece body
- Zinc die cast handle
- 40mm ceramic disc
- 195mm reach swivel spout
- Suitable for up to 40mm bench thickness
- Threaded rod and horse shoe brackets
- 90mm - Bench to centre of outlet

**Raymor**  
more like you

## BATHROOM

### LAWSON VANIY BASIN

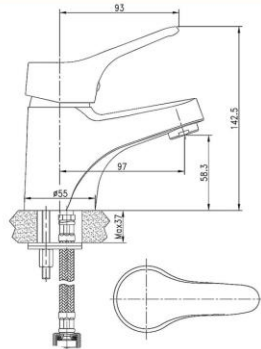


- Tradelink code – 132836
- White vitreous china
- 1 tap hole
- Inset vanity basin
- 32-40mm compatible chrome pop-up waste with hair catcher
- Chrome plated plastic overflow grille
- 4.8 litre capacity
- Installation instructions, cut out template, plug and waste and overflow cap included

**Raymor**  
more like you



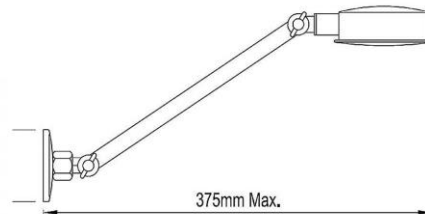
## ARMADA BASIN MIXER



- Tradelink code – 133359
- Brass one piece body
- Zinc die cast handle
- 40mm ceramic disc cartridge
- 95mm fixed spout
- Height: 55mm - Bench to centre of outlet
- Threaded rod and horse shoe brackets
- Installation instructions included

**Raymor**  
more like you

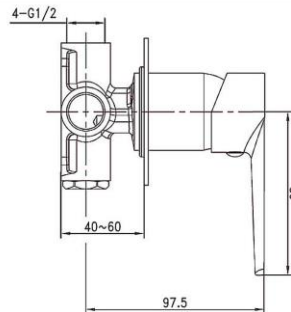
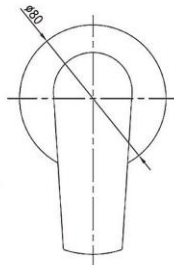
## SHOWER HEAD WITH ARM



- Tradelink code – 043686
- Brass construction
- 3 adjustment points
- 1/2" BSP female thread (wall connection)

**Raymor**  
more like you

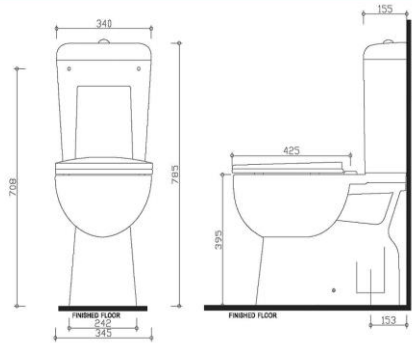
## ALPHA BATH/SHOWER MIXER



- Tradelink code – 150013
- Brass 4-port one piece body
- Zinc die cast handle
- Chrome plated
- 35mm ceramic disc
- Paddle handle
- 80mm diameter wall plate

**Raymor**  
more like you

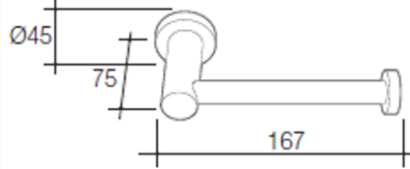
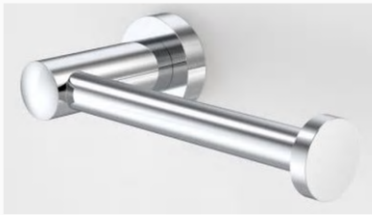
## CLASSIC II CLOSE COUPLED SUITE



- Tradelink code – 133575
- Vitreous china pan and cistern
- 48mm round dual flush button with chrome finish
- White soft close quick release seat with metal hinges
- Boxed rim
- S-trap set out 153mm as standard
- Left and right hand bottom inlet options

**Raymor**  
more like you

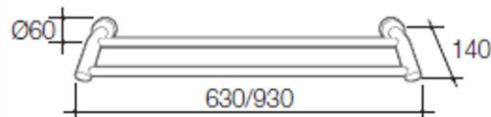
## COSMO METAL TOILET ROLL HOLDER



- Tradelink code – 105508
- Colour** Chrome
- Material** Metal
- Width** 170mm
- Height** 45mm
- Depth** 78mm
- Warranty** 5 years replacement product  
1 year - Labour, Finishes\*\*, Wall Fixings, Mounting Brackets



## COSMO METAL DOUBLE TOWEL RAIL 630MM



- Tradelink code – 105516
- Colour** Chrome
- Material** Metal
- Width** 60mm
- Height** 45mm
- Depth** 140mm
- Warranty** 5 years replacement product  
1 year - Labour, Finishes\*\*, Wall Fixings, Mounting Brackets



**Tradelink**

## Electrical



- 14 x Double power point
- 4 x single power point for rangehood
- 1 x single power point for Dishwasher
- 1 x power hot water unit
- 2 x Double weatherproof power point
- 2 x Wire electric oven
- 2 x TV points
- 2 x Smoke detector
- 16 x LED Down Lights
- 2 x LED outside oyster lights
- 2 x 8-inch exhaust fan
- Meter board with safety switch



Power Point



Light Switch



## Hard Ware

- Lockwood door handle set – Satin Stainless steel
- smooth internal doors
- External Door



Circular Privacy Set Satin Chrome

Hume 2040 x 820 x 40mm Entrance Door  
SPM Savoy Frosted Glass XS11



*Front Door*

Hume 2040 x 820 x 35mm External Door  
Duracote Flush Solicore SCX1



*Back Door*

Corinthian Internal Door RMDF Flush



*Internal Door*

## Roller Blinds

- Day and Night Roller blinds for each window



Eclipse Double  
Black & Ebony

# Verandah & Deck

## Post

- 90mm x 90mm Galvanized Verandah Post

## Sub Floor Structure

"Grab your steel from Greggies"



Gregg & Sons (steel) Pty Ltd  
Buronga 50215155  
Steel All Types Cut To Size And  
Delivered!

- Engineer designed heavy duty galvanised sub floor
- Joist 150mm x 50mm x 2mm galvanised steel.
- Bearers 150 PFC painted with Rust Kill

## Roof Cladding



- Roof Corrugated COLOUR BOND
- Metal Gutter slotted OG 150mm x 60mm
- All Colours chosen by client

## Decking

- Modwood decking – 88mm x 23mm

## Electrical

- 2 x 1m long LED lights

